

PART OF SEC. 29, T.7N., R.3E., S.L.B. & M.
EVERGREEN PARK SUBDIVISION NO. 1

IN WEBER COUNTY

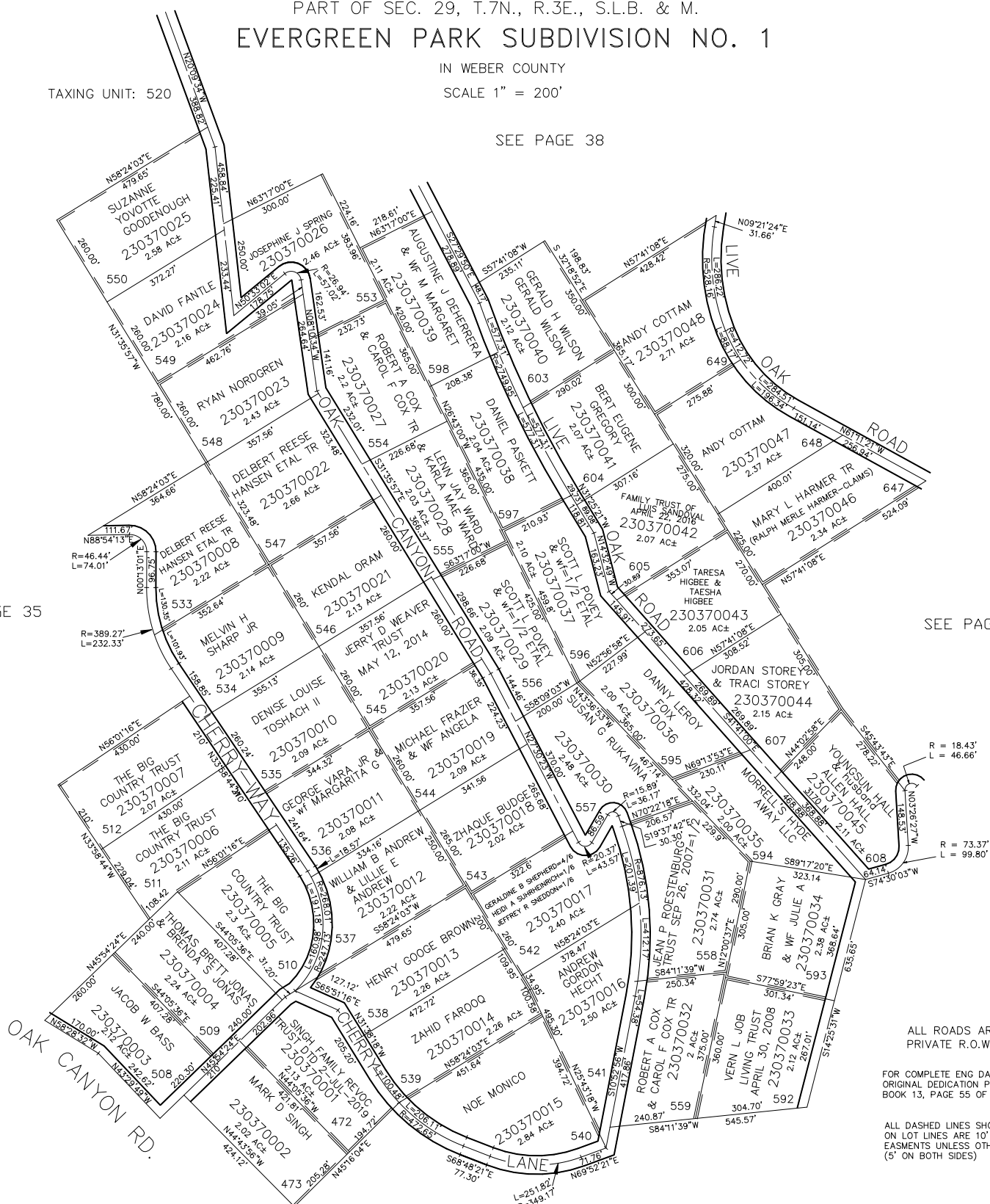
SCALE 1" = 200'

TAXING UNIT: 520

SEE PAGE 38

SEE PAGE 35

SEE PAGE 39



ALL ROADS ARE
PRIVATE R.O.W.'S

FOR COMPLETE ENG DATA SEE
ORIGINAL DEDICATION PLAT IN
BOOK 13, PAGE 55 OF RECORDS.

ALL DASHED LINES SHOWN
ON LOT LINES ARE 10' UTILITY
EASEMENTS UNLESS OTHERWISE NOTED.
(5' ON BOTH SIDES)